

Robinson
Meier
Juilly & Associates

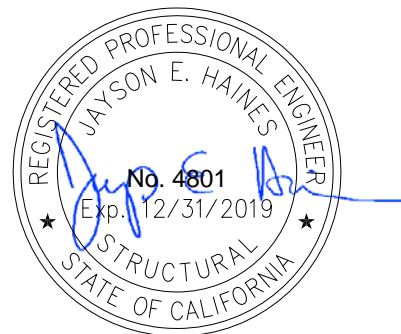
Principals
Peter Robinson, S.E.
Jayson E. Haines, S.E.



Structural Drawings For Seismic Anchorage

Prepared for:

Schneider Electric
March 2, 2018
RMJ Job No. 14109
Valid Thru December 31, 2019



GENERAL NOTES

DESIGN

This Design and design forces are based on 2015 IBC.

This Document may only be used with the express written consent of the manufacturer listed below for the specific project site and installation location. This document is invalid without such consent.

Design Criteria:

Importance Factor1.5

Maximum Value of $S_{DS}=2.0$, $a_p=1.0$, $R_p=2.5$, $\Omega_0=2.5$ (As req'd for anchorage to concrete), $z/h=0.0$ (Concrete slab on grade), $z/h=0.5$ (For Upper Levels)

Forces per ASCE 7-10 section 13.3.1, Equations 13.3-1, 13.3-2 & 13.3-3.

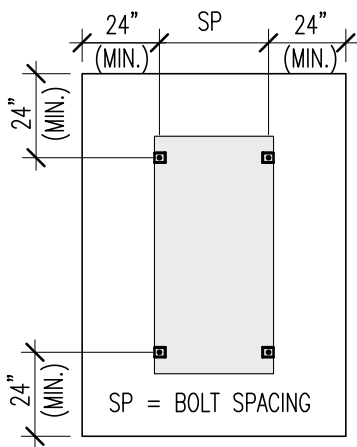
Note: For Site Specific S_{DS} , SEOR shall determine appropriate value to be utilized.

Dimensions: Refer to rough concrete surfaces, or top of slab, unless otherwise indicated.

Fasteners Expansion Anchors:

Anchor Diameter	Concrete Type	Min. f'c (psi)	Anchor Type	ICC Report No.	Min. Embed.	Min. Spacing	Min. Edge Dist.	Min. Conc. Thickness	Torque Test	Direction Tension
1/2"	Normal Weight	3,000	Hilti Kwik Bolt CS	ESR-1917	2 ³ / ₈ "	6 ¹ / ₂ "	24"	4"	40 FT-LB	2,600 lb

Tension testing shall be done in the presence of the special inspector and a report of the test results shall be submitted to SEOR (After at least 24 hours have elapsed since installation, direct pull tension test or torque test at least 50% of the anchors.) Testing shall be done in the presence of Special Inspector, and a report shall be submitted to the enforcement agency.



TYPICAL CONCRETE
EDGE DETAIL

Acceptance Criteria:

Direction Tension Test:


Anchor shall have maintain test load of (15) seconds & shall exhibit no discernable movement during the tension test, e.g., as evidenced by loosening of the washer under the nut.

Torque Test:

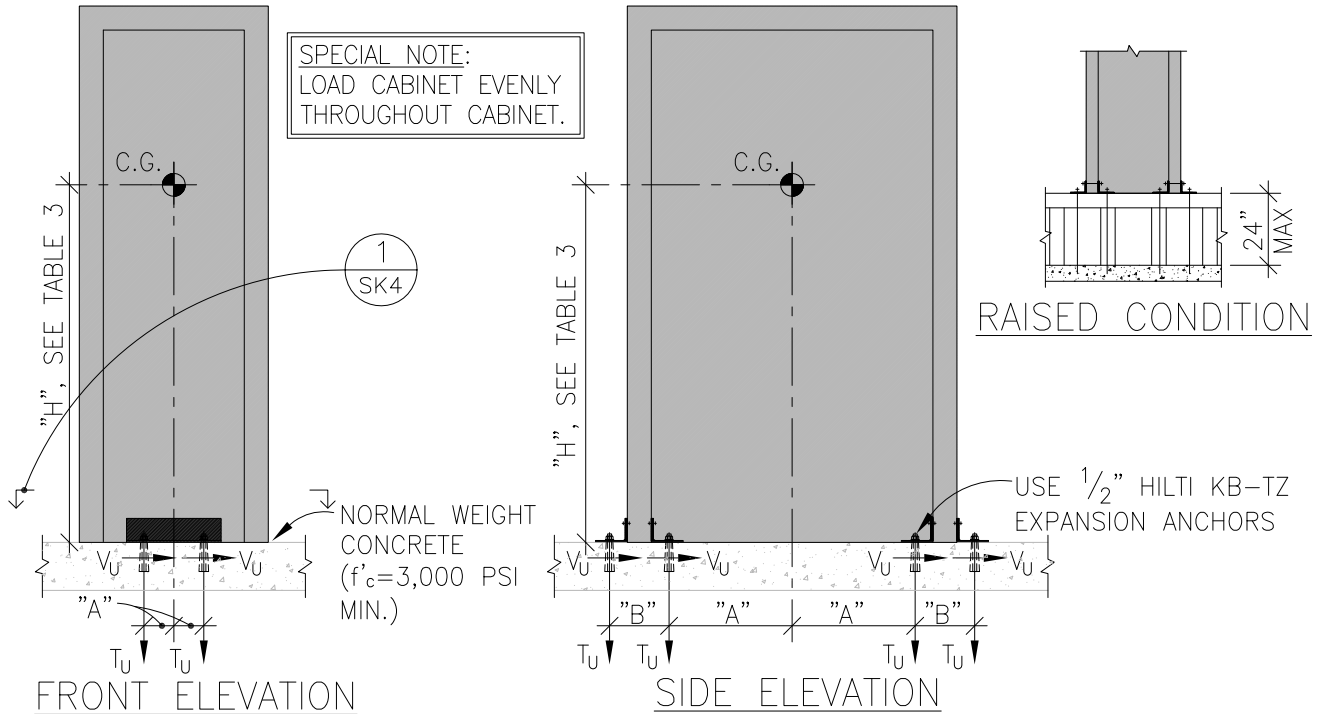
The applicable torque must be achieved within the following limits: wedge type: 1/2 turn of the nut.

*If any anchor fails testing, all anchors of the same type shall be tested, which are install by the same trade, not previously tested until twenty (20) consecutive anchors pass, then resume initial test frequency.



 <p>Robinson Meier Jully & Associates</p> <p>241 Joaquin Avenue San Leandro CA 94577 510.991.0977</p>	<p>SCHNEIDER ELECTRIC NETSHELTER SX ANCHORAGE</p>	<p>Job No. 14109.01</p>
	<p>LOW, MODERATE, AND HIGH SEISMIC REGIONS</p>	<p>Sheet No. (SK1)</p>
	<p>Signed by MAS Date 11.2016</p>	

SEISMIC SUPPORT & ANCHORAGE



NOTES:

1. DESIGN CENTER OF GRAVITY AT 1/2 THE HEIGHT OF THE UNIT. (NOTE: ACTUAL CENTER OF GRAVITY DOES NOT EXCEED DESIGN HEIGHT.)
2. FORCES ARE DETERMINED PER 2012 INTERNATIONAL BUILDING CODE AND ASCE 7-10 STRENGTH DESIGN. ($S_{DS}=2.0$ (HIGH SEISMIC) 1.0 (LOW SEISMIC), $a_p=1.0$, $I_p=1.5$, $R_p=2.5$, $\Omega_0=2.5$, $z/h=0$ (GROUND LEVEL) & $z/h=.5$ (50% OF BLDG. HT.)).
3. SEE GENERAL NOTES FOR ALL OTHER CONDITIONS AND LIMITATIONS.
4. NETSHELTER SX EXTERIOR CABINET UNIT COVER COMPOSED OF 14 ga COLD ROLLED STEEL 29.4 ksi.
5. SIGN MUST BE POSTED INDICATING CABINET TOTAL WT. LIMITS LISTED IN THE TABLE 1.
6. WEIGHTS LISTED IN "TABLE 1" APPLY TO ALL UNITS IRRESPECTIVE OF SIZE.

MAXIMUM CABINET CONTENT WEIGHT LB (TABLE 1)

ALLOWABLE CABINET ADDED WEIGHT *ALL WEIGHTS GIVEN IN (LB) TABLE 1

MAX CABINET WT. (500)	LOW & MODERATE SEISMIC				HIGH SEISMIC			
	GROUND		UPPER		GROUND		UPPER	
	ON FLOOR	RAISED	ON FLOOR	RAISED	ON FLOOR	RAISED	ON FLOOR	RAISED
SINGLE UNIT	1,500	850	1,200	1,200	1,000	SS ¹	1,200	1,200
GANGED UNIT	2,000	2,000	1,200	1,200	1,500	1,500	1,200	1,200

(INCLUDES Ω_0 FOR ANCHORAGE TO CONCRETE)

DIMENSIONS, AND DEMAND LOADING (TABLE 2)

COVERS ALL SCHNEIDER ELECTRIC NETSHELTER SX UNITS WITH-IN THE FOLLOWING DIMENSIONS	CABINET DIMENSIONS		
	WIDTH (in.)	LENGTH (in.)	HEIGHT (in.)
	23.6-31.5	42.1-51.2	47.17-99.6



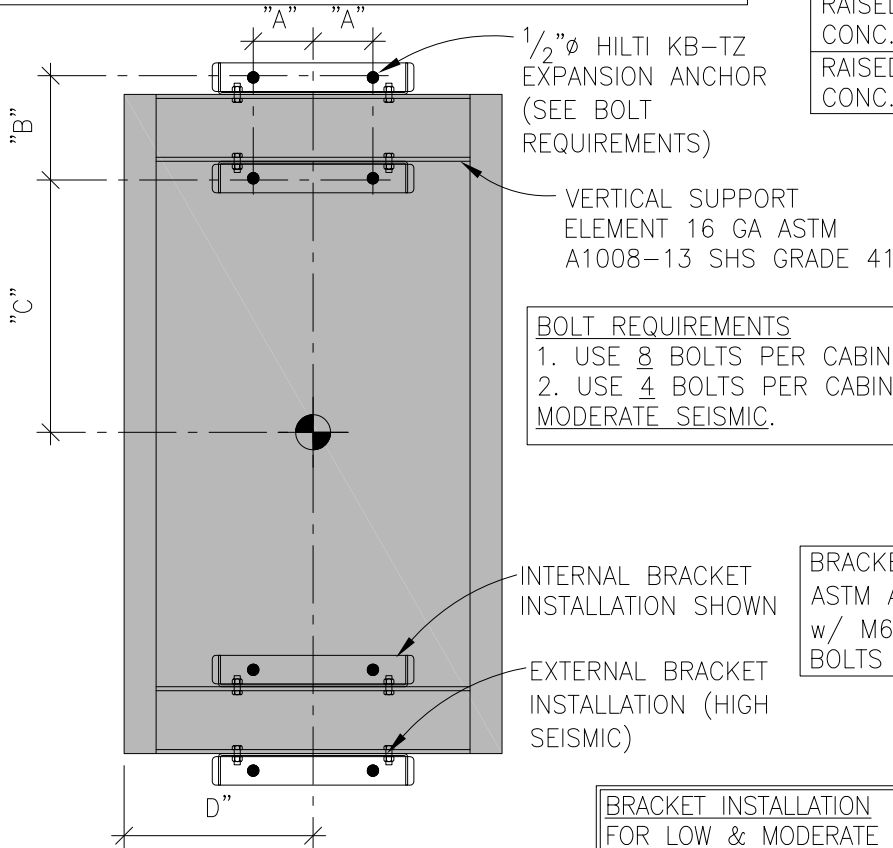
<p>Robinson Meier Juilly & Associates 241 Joaquin Avenue San Leandro CA 94577 510.991.0977</p>	SCHNEIDER ELECTRIC NETSHELTER SX ANCHORAGE	Job No. 14109.01
	LOW, MODERATE, AND HIGH SEISMIC REGIONS	Sheet No. (SK3)
	Signed by MAS Date 4.2017	

NOTES:

- *POSITION BOLTS IN OUTER OR UPPER HALF OF SLOTTED BOLT HOLES WHERE APPLICABLE
- *SEE MANUFACTURE DRAWINGS FOR EXACT DIMENSIONS OF NETSHELTER SX CABINETS. AR3100 SHOWN FOR REFERENCE.
- *HIGH SEISMIC BRACKET INSTALLATION SHOWN HERE. CLIENT HAS OPTION TO USE INTERNAL OR EXTERNAL BRACKET INSTALLATION FOR LOW AND MODERATE SEISMIC REGIONS

CONDITION SCHEDULE

CONDITION	SEE
CONCRETE SLAB	(SK6)
CONCRETE FILL OVER METAL DECK	(SK7)
RAISED COMP. FLOOR CONC. FILL METAL DECK	(SK8)
RAISED COMP. FLOOR CONC. SLAB	(SK9)



BOLT REQUIREMENTS
 1. USE 8 BOLTS PER CABINET FOR HIGH SEISMIC.
 2. USE 4 BOLTS PER CABINET FOR LOW AND MODERATE SEISMIC.

BRACKET MATERIAL (0.135" THK, ASTM A1008-13 SHS GRADE 41) w/ M6 (ISO 898-1 CLASS 10.9) BOLTS PROVIDED BY NETSHELTER.

BRACKET INSTALLATION
 FOR LOW & MODERATE CONDITIONS CUSTOMER MAY CHOOSE EITHER INTERNAL OR EXTERNAL BRACKET INSTALLATION, SEE SK10.
 FOR HIGH SEISMIC CONDITIONS, BOTH BRACKETS ARE REQUIRED, SEE SK13

SINGLE UNIT BOTTOM PLAN VIEW

PLAN

N.T.S.

1
SK4

ANCHOR BOLT DIMENSIONS TABLE 3

"H"	"A"	"B"	"C"	"D"
MAX (in.)	MAX (in.)	MAX (in.)	MAX (in.)	MAX (in.)
59.3"	3.74"	5.9"	15.03"	15.75"

WORST CASE VALUES



RMJ
 Robinson Meier Juilly & Associates
 Structural Engineers
 241 Joaquin Avenue
 San Leandro CA 94577
 510.991.0977

SCHNEIDER ELECTRIC
 NETSHELTER SX ANCHORAGE
 LOW, MODERATE, AND HIGH SEISMIC REGIONS
 Signed by MAS Date 11.2016

Job No. 14109.01
 Sheet No. (SK4)

NOTES:

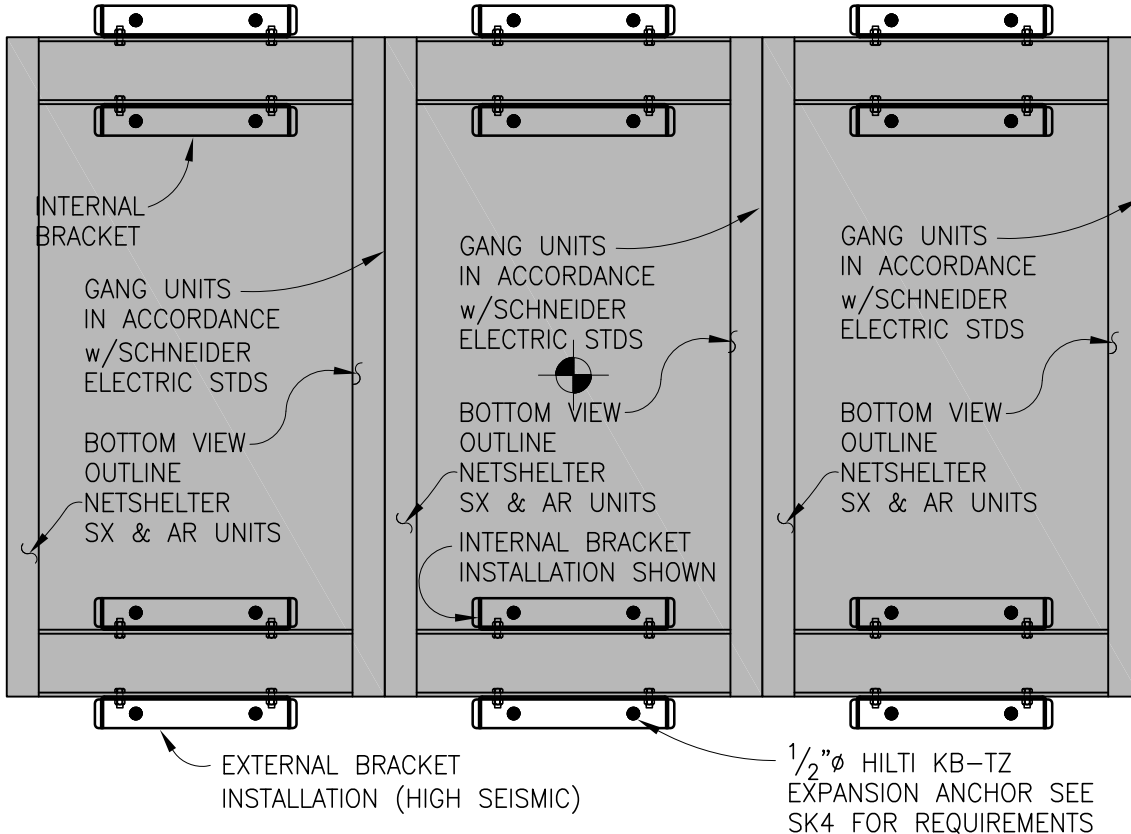
- *POSITION BOLTS IN OUTER OR UPPER HALF OF SLOTTED BOLT HOLES WHERE APPLICABLE
- *SEE MANUFACTURE DRAWINGS FOR EXACT DIMENSIONS OF NETSHELTER SX CABINETS. AR3100 SHOWN FOR REFERENCE.
- *HIGH SEISMIC BRACKET INSTALLATION SHOWN HERE. CLIENT HAS OPTION TO USE INTERNAL OR EXTERNAL BRACKET INSTALLATION FOR LOW AND MODERATE SEISMIC REGIONS

INSTALLATION FOR THE FOLLOWING CONDITIONS:

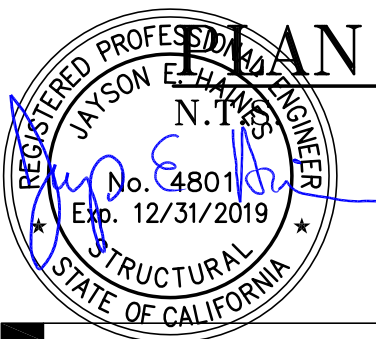
1. SEE BOLT REQUIREMENTS ON SK4 FOR ANCHORAGE REQUIREMENTS.

CONDITION SCHEDULE

CONDITION	SEE
CONCRETE SLAB	(SK6)
CONCRETE FILL OVER METAL DECK	(SK7)
RAISED COMP. FLOOR CONC. FILL METAL DECK	(SK8)
RAISED COMP. FLOOR CONC. SLAB	(SK9)



GANG UNIT BOTTOM PLAN VIEW (3 UNITS OR MORE GANGED TOGETHER)

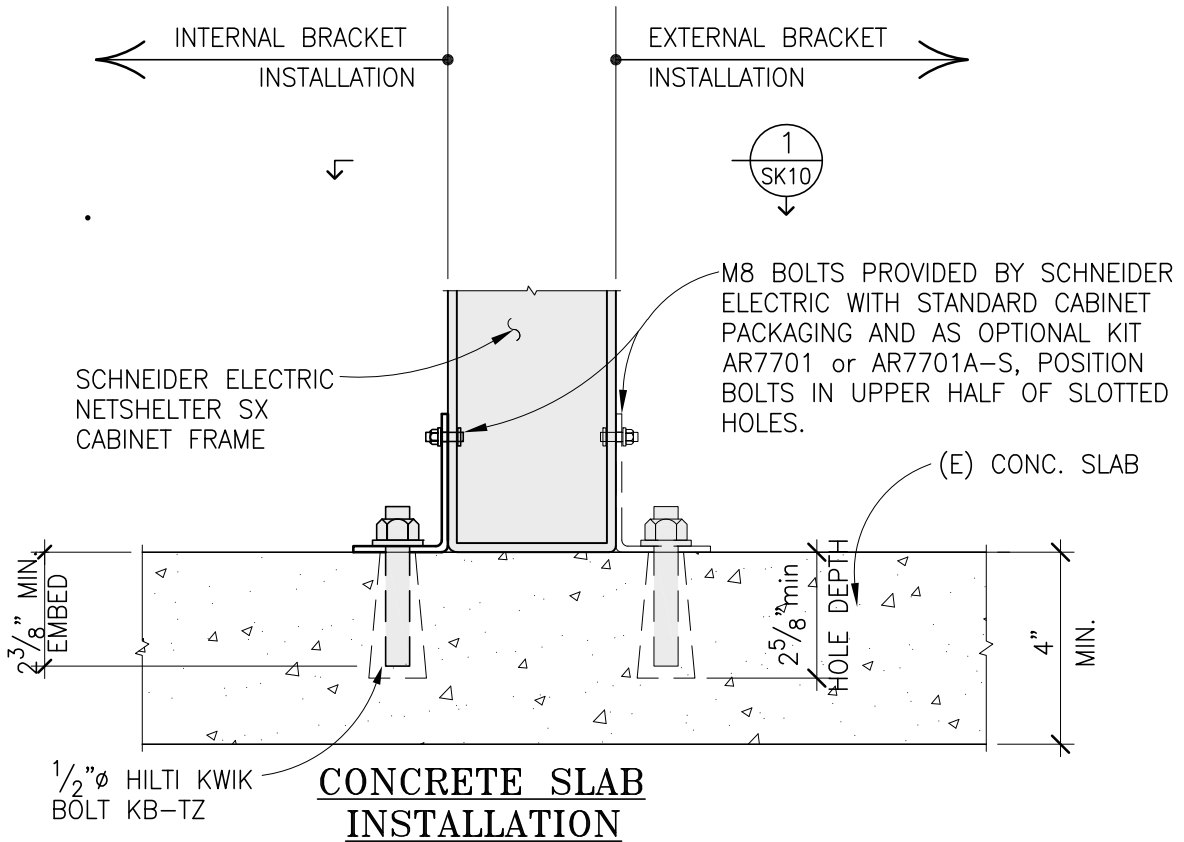


1
SK5

BRACKET INSTALLATION
 FOR LOW & MODERATE CONDITIONS CUSTOMER MAY CHOOSE EITHER INTERNAL OR EXTERNAL BRACKET INSTALLATION, SEE SK10.
 FOR HIGH SEISMIC CONDITIONS, BOTH BRACKETS ARE REQUIRED, SEE SK13

<p>Robinson Meier Juilly & Associates 241 Joaquin Avenue San Leandro CA 94577 510.991.0977</p>	<p>SCHNEIDER ELECTRIC NETSHELTER SX ANCHORAGE LOW, MODERATE, AND HIGH SEISMIC REGIONS</p>	<p>Job No. 14109.01</p>
	<p>Signed by MAS Date 11.2016</p>	<p>Sheet No. (SK5)</p>

NOTE:
 OPTIONAL EXTERNAL
 INSTALLATION SHOWN DASHED.



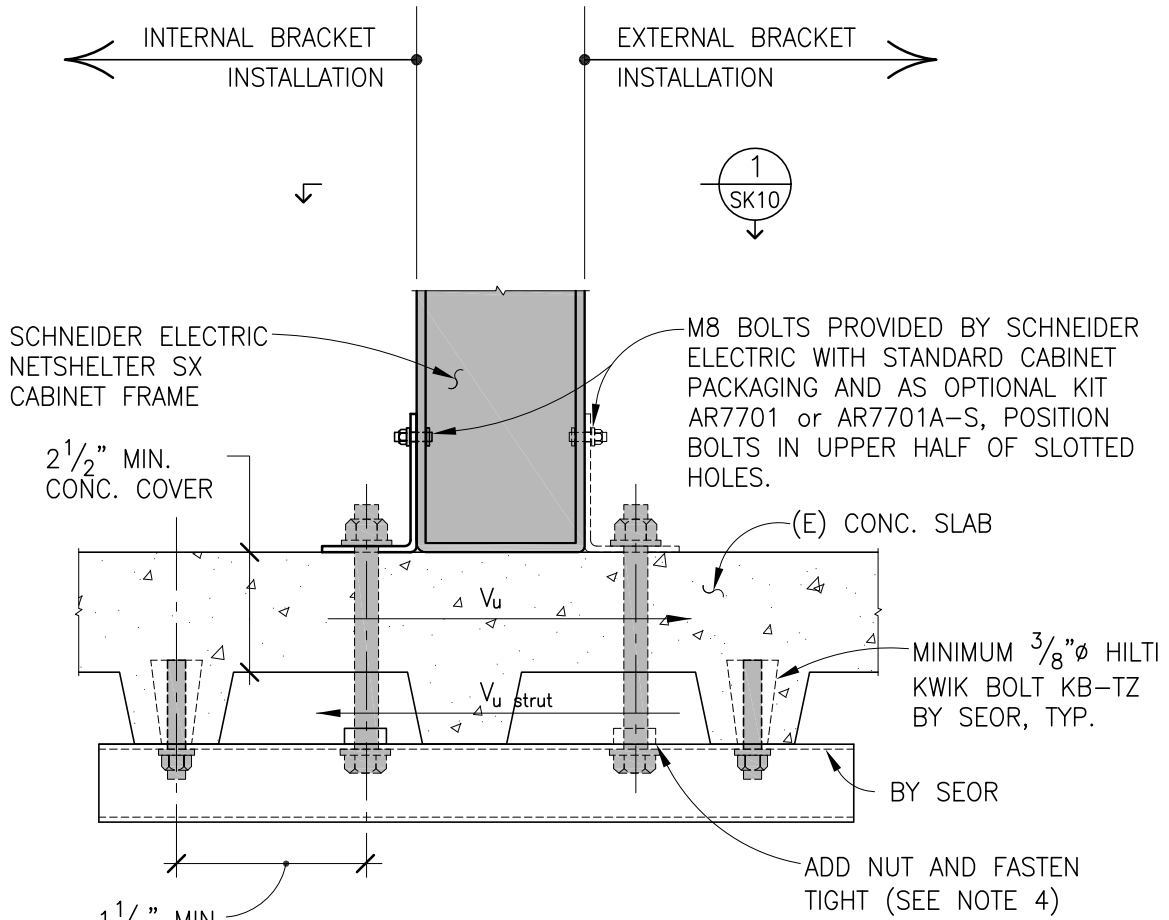
DETAIL

1
SK6

3" = 1'-0"

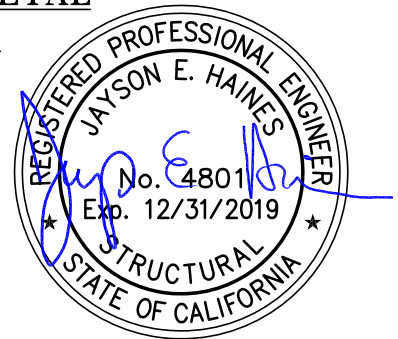
<p>Robinson Meier Juilly & Associates</p> <p>241 Joaquin Avenue San Leandro CA 94577 510.991.0977</p>	<p>SCHNEIDER ELECTRIC NETSHELTER SX ANCHORAGE</p>	<p>Job No. 14109.01</p>
	<p>LOW, MODERATE, AND HIGH SEISMIC REGIONS</p>	<p>Sheet No. SK6</p>
	<p>Signed by MAS Date 11.2016</p>	


NOTE:
 OPTIONAL EXTERNAL
 INSTALLATION SHOWN DASHED.



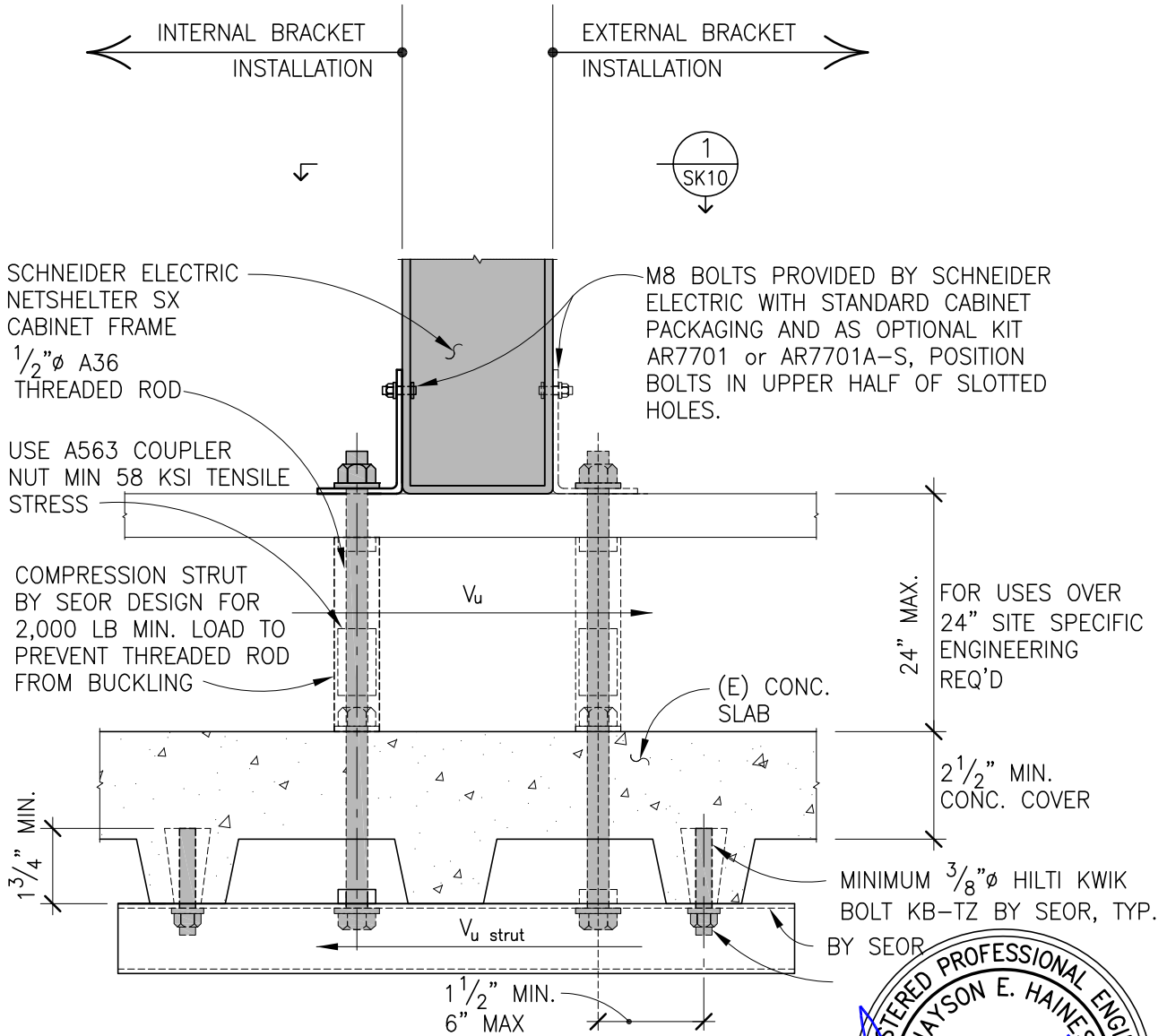
**CONCRETE FILL OVER METAL
 DECK INSTALLATION**

DETAIL 1
 3" = 1'-0" SK7



 Robinson Meier Juilly & Associates 241 Joaquin Avenue San Leandro CA 94577 510.991.0977	SCHNEIDER ELECTRIC NETSHELTER SX ANCHORAGE	Job No. 14109.01
	LOW, MODERATE, AND HIGH SEISMIC REGIONS	Sheet No. SK7
	Signed by MAS Date 11.2016	

NOTE:
 OPTIONAL EXTERNAL
 INSTALLATION SHOWN DASHED.



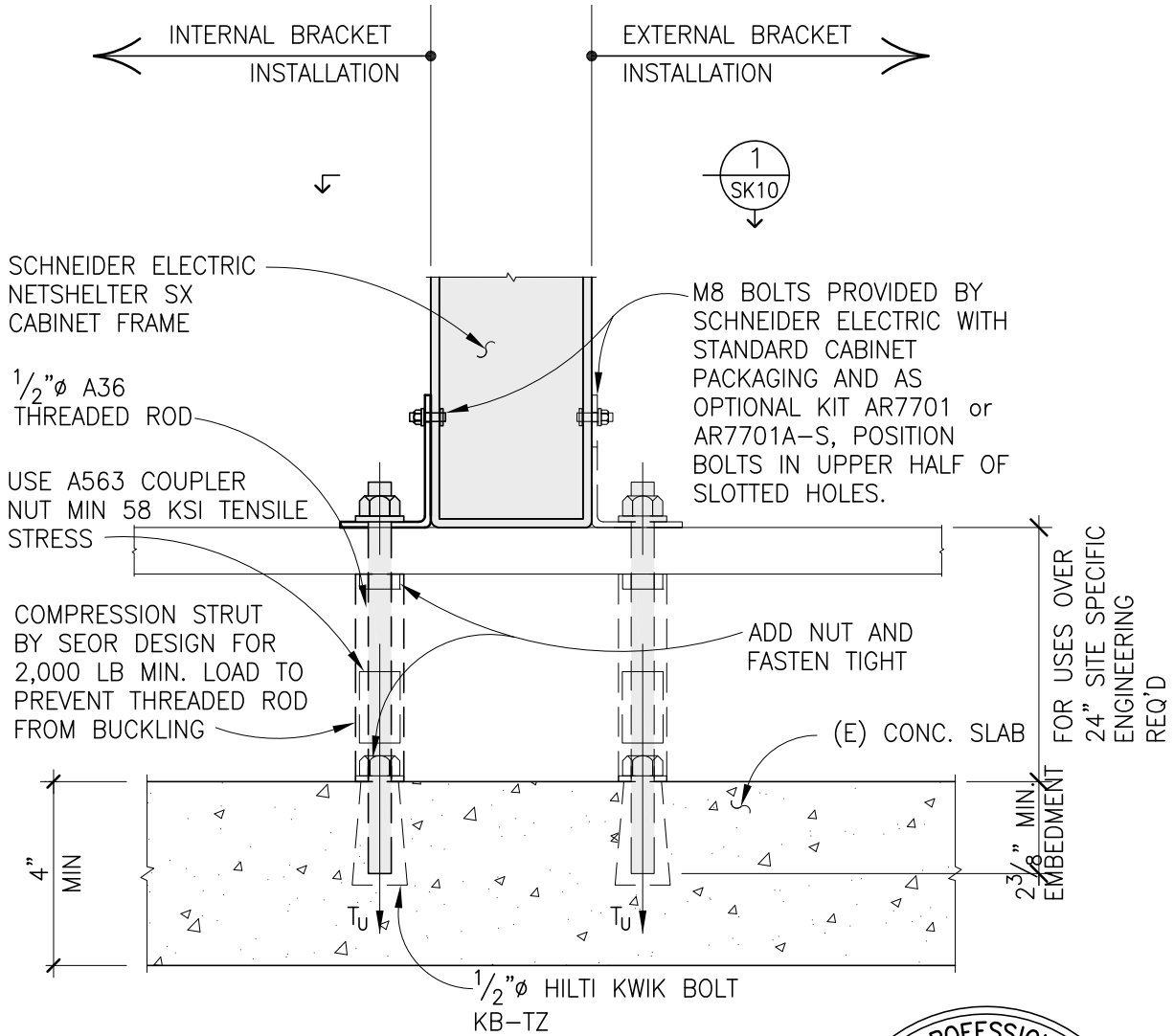
**RAISED COMPUTER OVER CONC.
 FILLED METAL DECK INSTALLATION**

DETAIL 1
 3" = 1'-0" SK8



<p>Robinson Meier Jullily & Associates 241 Joaquin Avenue San Leandro CA 94577 510.991.0977</p>	<p>SCHNEIDER ELECTRIC NETSHELTER SX ANCHORAGE</p>	<p>Job No. 14109.01</p>
	<p>LOW, MODERATE, AND HIGH SEISMIC REGIONS</p>	<p>Sheet No. SK8</p>
	<p>Signed by MAS Date 11.2016</p>	

NOTE:
 OPTIONAL EXTERNAL
 INSTALLATION SHOWN DASHED.

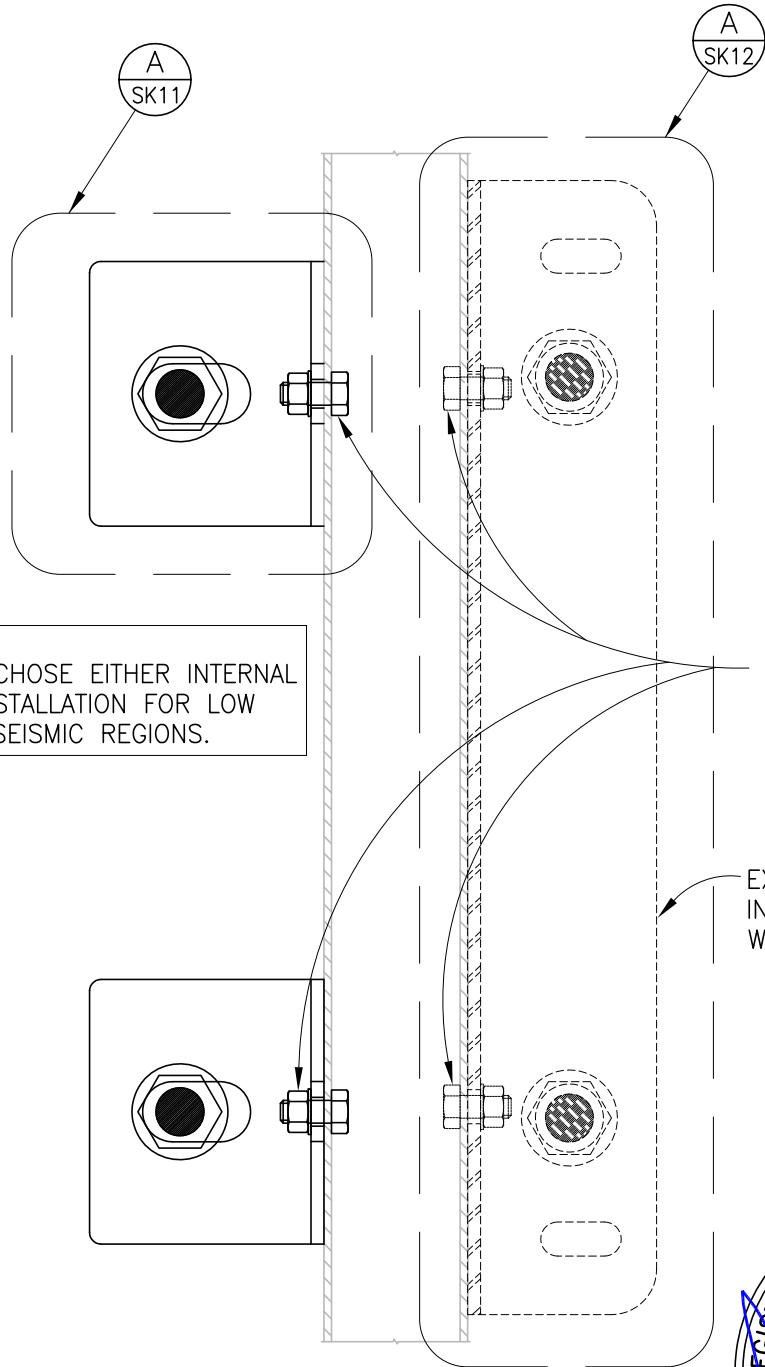


**RAISED COMPUTER OVER CONC.
 SLAB INSTALLATION**

DETAIL 1
 3" = 1'-0" SK9



<p>Robinson Meier Juilly & Associates 241 Joaquin Avenue San Leandro CA 94577 510.991.0977</p>	<p>SCHNEIDER ELECTRIC NETSHELTER SX ANCHORAGE</p>	<p>Job No. 14109.01</p>
	<p>LOW, MODERATE, AND HIGH SEISMIC REGIONS</p>	<p>Sheet No. SK9</p>
	<p>Signed by MAS Date 11.2016</p>	

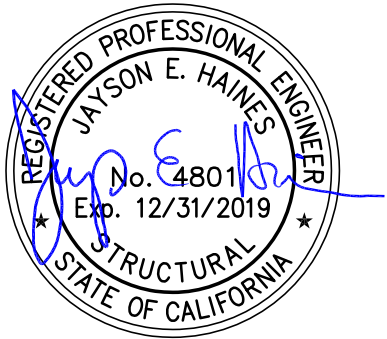


NOTE:
 CUSTOMER MAY CHOSE EITHER INTERNAL
 OR EXTERNAL INSTALLATION FOR LOW
 AND MODERATE SEISMIC REGIONS.

M6x12 HEX HEAD
 CAP SCREW GRADE
 10.9 STEEL ZINC
 PLATED ISO
 898-1, TYP.

EXTERIOR BRACKET
 INSTALLATION
 WHERE APPLICABLE

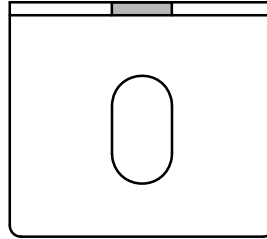
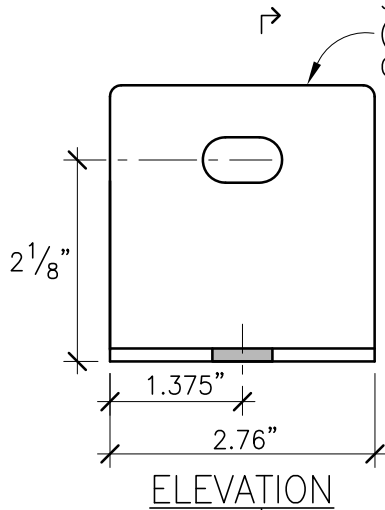
DETAIL **B**
 N.T.S. **SK10**



 Robinson Meier Juilly & Associates 241 Joaquin Avenue San Leandro CA 94577 510.991.0977	SCHNEIDER ELECTRIC NETSHELTER SX ANCHORAGE	Job No. 14109.01
	LOW, MODERATE, AND HIGH SEISMIC REGIONS	Sheet No. (SK10)
	Signed by MAS Date 11.2016	

AR7701 BRACKET SUPPLIED BY
SCHNEIDER ELECTRIC (4 TOTAL)
(0.118" THK PL ASTM A1008 SHS
GRADE 41)

AR7701 BRACKET
FOR LOW AND MODERATE
SEISMIC REGIONS



PLAN

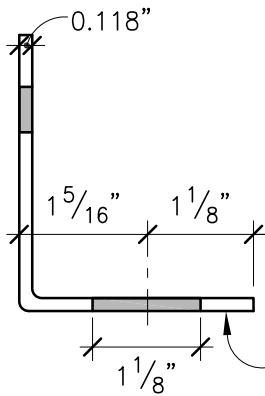
ELEVATION

B
SK11

DETAIL

N.T.S.

A
SK11



ASTM A1008-13 SHS
GRADE 41, TYP.

NOTE:

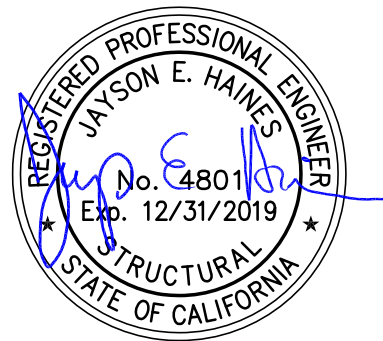
FOR EXACT BRACKET DIMENSION SEE
SCHNEIDER ELECTRIC NETSHELTER SX
MANUFACTURER DRAWINGS.

SECTION

DETAIL

N.T.S.

B
SK11



RMJ

Robinson
Meier
Juilly & Associates

Structural Engineers

241 Joaquin Avenue
San Leandro CA 94577
510.991.0977

SCHNEIDER ELECTRIC
NETSHELTER SX ANCHORAGE
LOW, MODERATE, AND HIGH
SEISMIC REGIONS

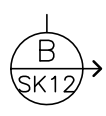
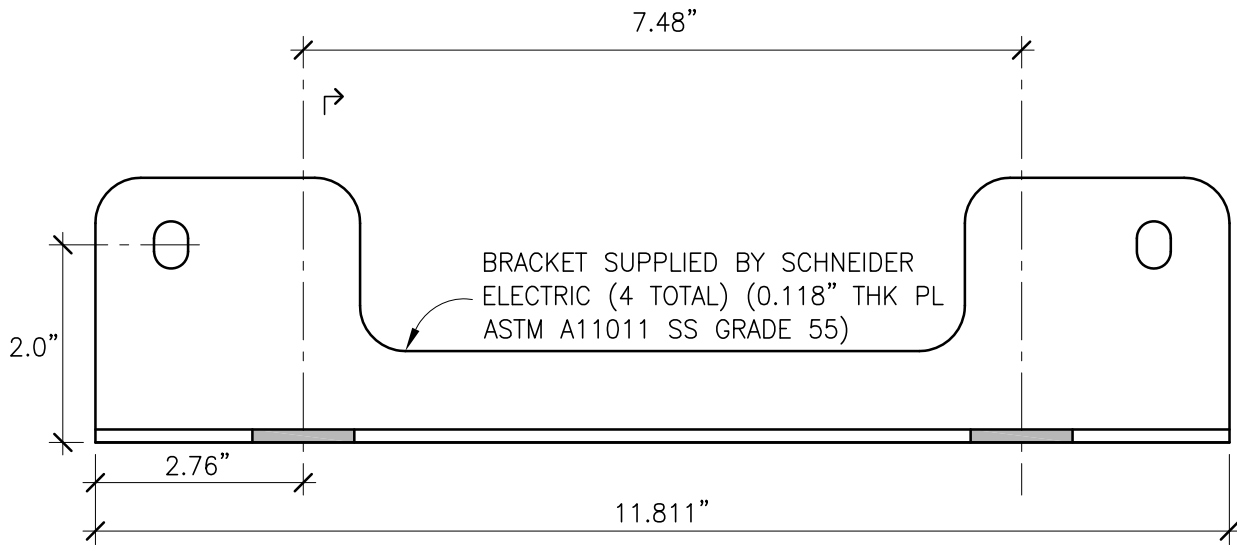
Signed by MAS

Date 11.2016

Job No.
14109.01

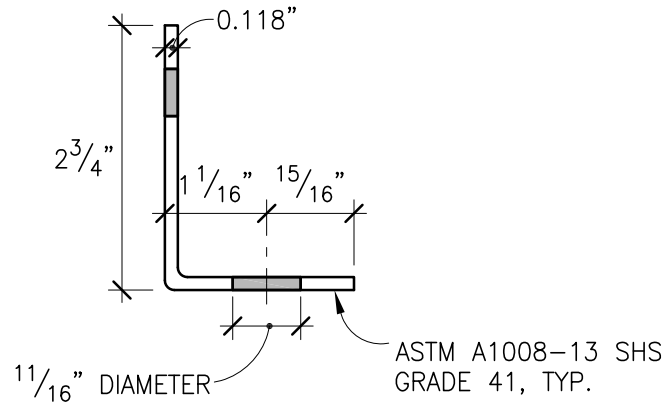
Sheet No.

(SK11)



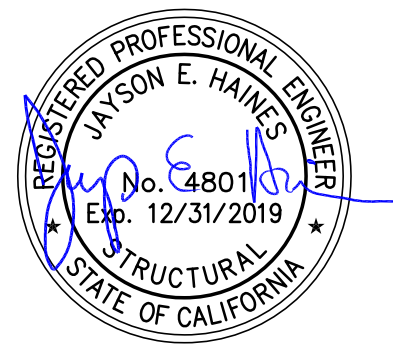
ELEVATION
DETAIL
 N.T.S. A
SK12

STD. PALLET BRACKET
 FOR LOW AND MODERATE
 SEISMIC REGIONS

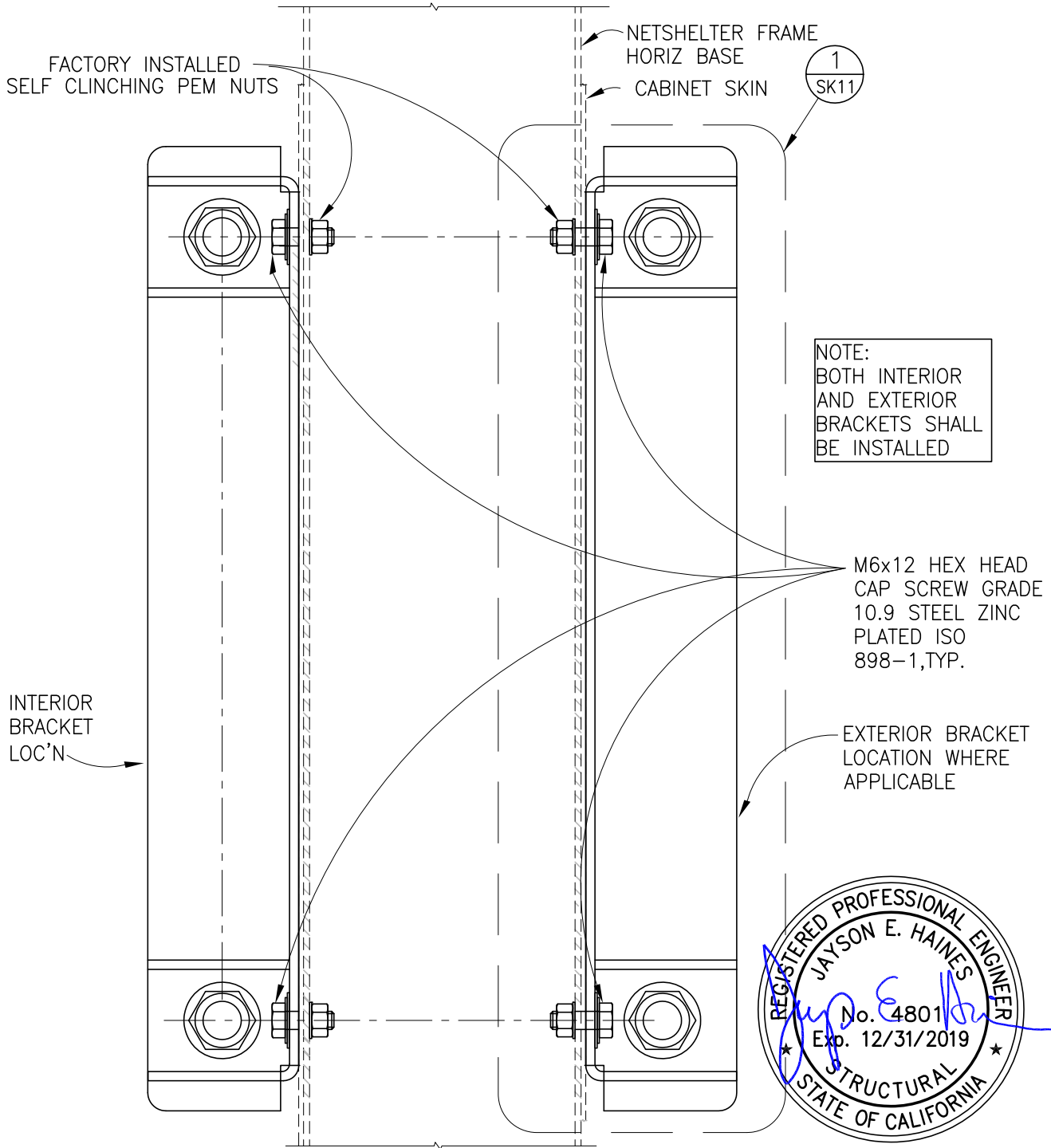


NOTE:
 FOR EXACT BRACKET DIMENSION SEE
 SCHNEIDER ELECTRIC NETSHELTER SX
 MANUFACTURER DRAWINGS.

SECTION
DETAIL
 N.T.S. B
SK12



 Robinson Meier Juilly & Associates 241 Joaquin Avenue San Leandro CA 94577 510.991.0977	SCHNEIDER ELECTRIC NETSHELTER SX ANCHORAGE	Job No. 14109.01
	LOW, MODERATE, AND HIGH SEISMIC REGIONS	Sheet No. SK12
	Signed by MAS Date 11.2016	

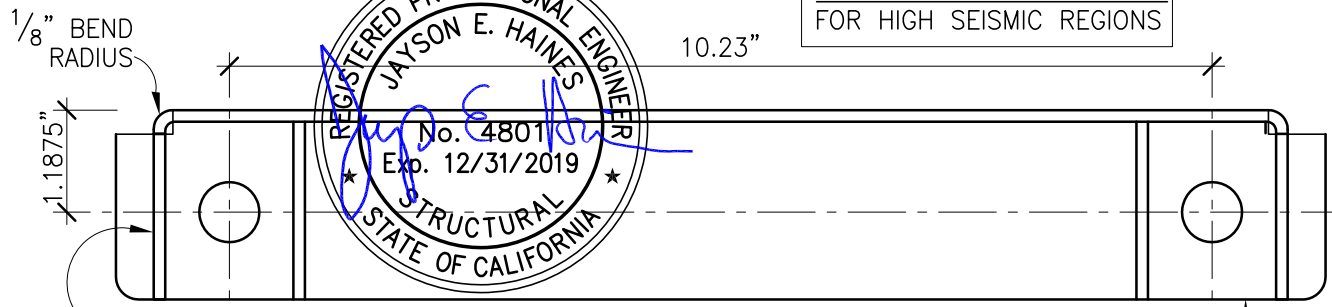
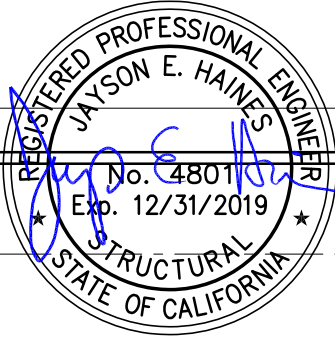


DETAIL **B**
N.T.S. **SK13**

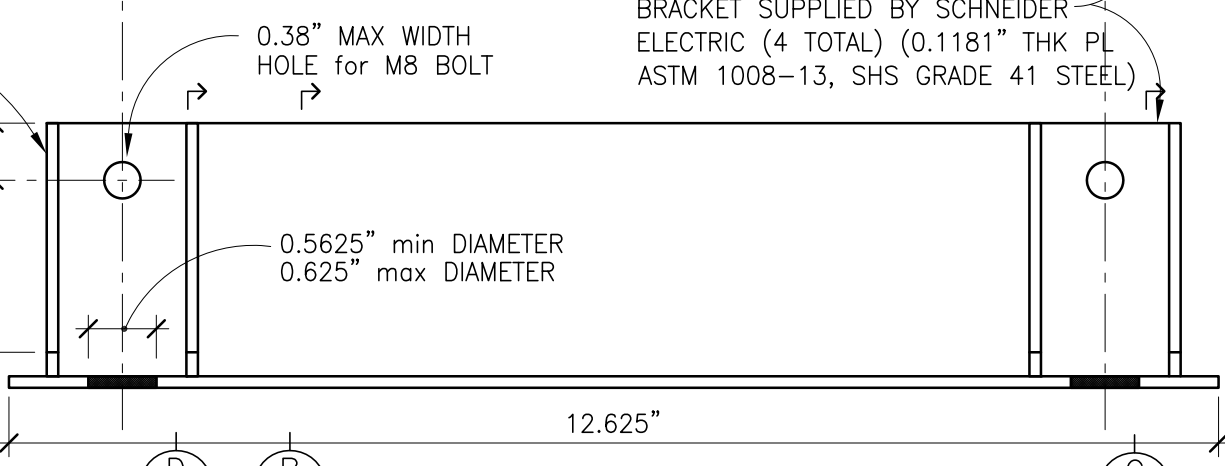
AR7701A-S BRACKET
FOR HIGH SEISMIC REGIONS

<p>Robinson Meier Juilly & Associates 241 Joaquin Avenue San Leandro CA 94577 510.991.0977</p>	<p>SCHNEIDER ELECTRIC NETSHELTER SX ANCHORAGE</p>		<p>Job No. 14109.01</p>
	<p>LOW, MODERATE, AND HIGH SEISMIC REGIONS</p>		<p>Sheet No. SK13</p>
	<p>Signed by MAS</p>	<p>Date 03.2018</p>	

AR7701A-S BRACKET
FOR HIGH SEISMIC REGIONS



SEISMIC BRACKET PLAN

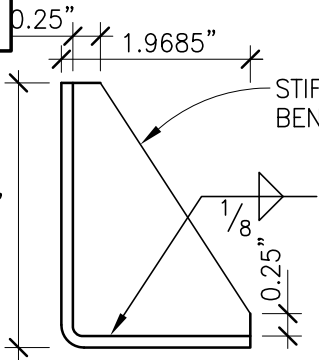
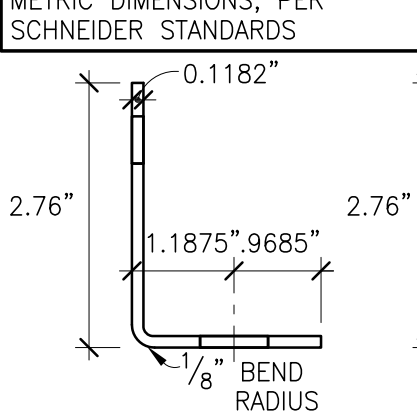


SEISMIC BRACKET ELEVATION

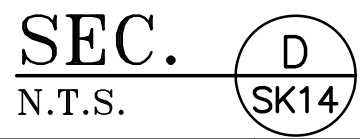
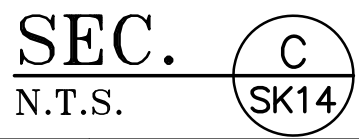
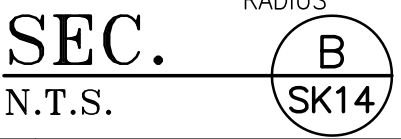
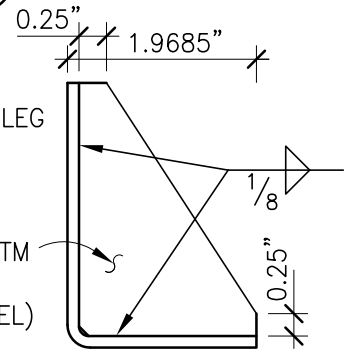
NOTE:
BRACKET SHALL BE FABRICATED
BY SCHEINDER ELECTRIC WITH
METRIC DIMENSIONS, PER
SCHEINDER STANDARDS

DETAIL

N.T.S.



PL 0.1181" ASTM
1008-13, SHS
GRADE 41 STEEL)



<p>Robinson Meier Juilly & Associates</p> <p>241 Joaquin Avenue San Leandro CA 94577 510.991.0977</p>	SCHNEIDER ELECTRIC NETSHELTER SX ANCHORAGE LOW, MODERATE, AND HIGH SEISMIC REGIONS		Job No. 14109.01
	Signed by MAS		Date 03.2018
			Sheet No. (SK13)