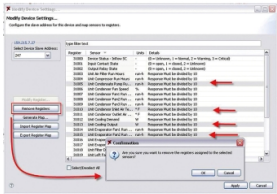


Product datasheet

Specifications



Data Center Expert Modbus TCP Output

AP95MODBUS

Overview

Presentation	The add-on Modbus TCP Output Module enables connection to Building Management Systems through ethernet transmission, ensuring fast data transmission.
Lead Time	Usually in Stock

Packing Units

Unit Type Of Package 1	PCE
Number Of Units In Package 1	1
Package 1 Height	22.9 cm
Package 1 Width	0.6 cm
Package 1 Length	17.8 cm
Package 1 Weight	0.45 kg

Disclaimer: This documentation is not intended as a substitute for and is not to be used for determining suitability or reliability of these products for specific user applications

Sustainability

Green Premium™ label is Schneider Electric's commitment to delivering products with best-in-class environmental performance. Green Premium promises compliance with the latest regulations, transparency on environmental impacts, as well as circular and low-CO₂ products.

[Learn more about Green Premium >](#)



Energy Efficient Take-back Transparency

Resource performance

✓ Energy Efficient Product

✓ Take-Back Program Available

Reach Regulation	REACH Declaration
Eu Rohs Directive	Not applicable, out of EU RoHS legal scope
Environmental Disclosure	Product Environmental Profile
Circularity Profile	End of Life Information