

SINGLE LINE DIAGRAM

INPUT CONFIGURATIONS (3W+G OUTPUT ONLY)

| | UPS | MBP | ISOL XFMR | CONFIG. |
|------|-----|-----|-----------|---------|
| 480V | ✓ | - | OPT | (A) |
| | ✓ | ✓ | ✓ | (C) |

SYSTEM ELECTRICAL CHARACTERISTICS:

| Rating, KVA/KW | 300/270 | 400/360 | 500/450 |
|--------------------|---------------------------------|---------------------------------|---------------------------------|
| Input Voltage | 480VAC, 3PH, 3W+G, 60hz. | 480VAC, 3PH, 3W+G, 60hz. | 480VAC, 3PH, 3W+G, 60hz. |
| Phase Rotation | ABC clockwise | ABC clockwise | ABC clockwise |
| Input Current | 371 amps nominal, 453 amps max. | 508 amps nominal, 590 amps max. | 656 amps nominal, 738 amps max. |
| Output Voltage | 480VAC, 3PH, 3or4W+G, 60hz. | 480VAC, 3PH, 3or4W+G, 60hz. | 480VAC, 3PH, 3or4W+G, 60hz. |
| Output Current | 361 amps | 481 amps | 601 amps |
| Bypass Voltage | 480VAC, 3PH, 3or4W+G, 60hz. | 480VAC, 3PH, 3or4W+G, 60hz. | 480VAC, 3PH, 3or4W+G, 60hz. |
| Bypass Current | 361 amps | 481 amps | 601 amps |
| DC Float Voltage | 545 VDC | 545 VDC | 545 VDC |
| DC Nominal Voltage | 480 VDC | 480 VDC | 480 VDC |
| DC Cut-off Voltage | 400 VDC | 400 VDC | 400 VDC |
| DC Current (max) | 721 amps | 962 amps | 1195 amps |
| Q1 Rating | 1000AT/1200AF | 1000AT/1200AF | 1000AT/1200AF |
| Q4S, Q5N, SW | 800AT/800AF | 800AT/800AF | 800AT/800AF |
| QF1 Rating | 700AT/1000AF | 1000AT/1000AF | 1200AT/1200AF |

NOTES:

- Follow the NEC (National Electrical Code) and other applicable local codes.
- Customer must be responsible for connecting all MGE-supplied cables and where indicated, must be responsible to provided some cable. Battery voltage drop shall be kept to less than 1% based on the battery disconnect rating.
- Input and Bypass shall not be provided from a corner-grounded delta system.
- Remove these jumpers when separate bypass input is provided.
- The UPS is equipped with this bonding jumper to meet NEC Article 250-5(D) and 250-26. Refer to MGE document 9110000.000 for the use or removal of this jumper.

THIS DRAWING AND SPECIFICATIONS HEREIN ARE THE PROPERTY OF SCHNEIDER ELECTRIC AND SHALL NOT BE COPIED, REPRODUCED OR USED IN WHOLE OR IN PART, AS THE BASIS FOR THE MANUFACTURE OR SALE OF ITEMS WITHOUT WRITTEN PERMISSION FROM SCHNEIDER ELECTRIC. THIS DRAWING IS BASED UPON LATEST AVAILABLE INFORMATION AND IS SUBJECT TO CHANGE WITHOUT NOTICE.



TITLE: MGE EPS 7000 480V, SINGLE MODULE 300/400/500KVA SINGLE-LINE DIAGRAM

PROJECT: STD SUBMITTAL DRAWINGS SHEET 1 OF 2

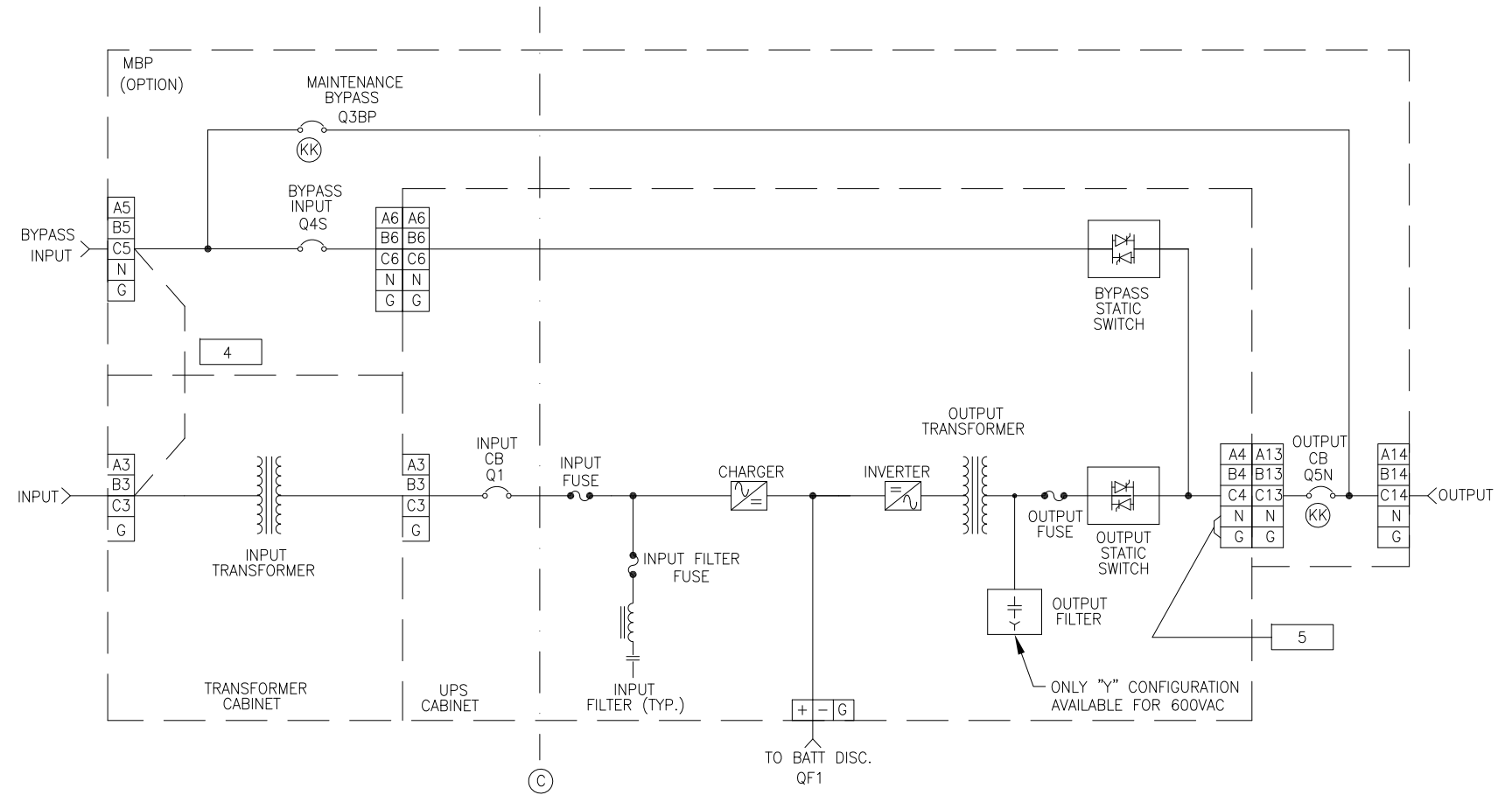
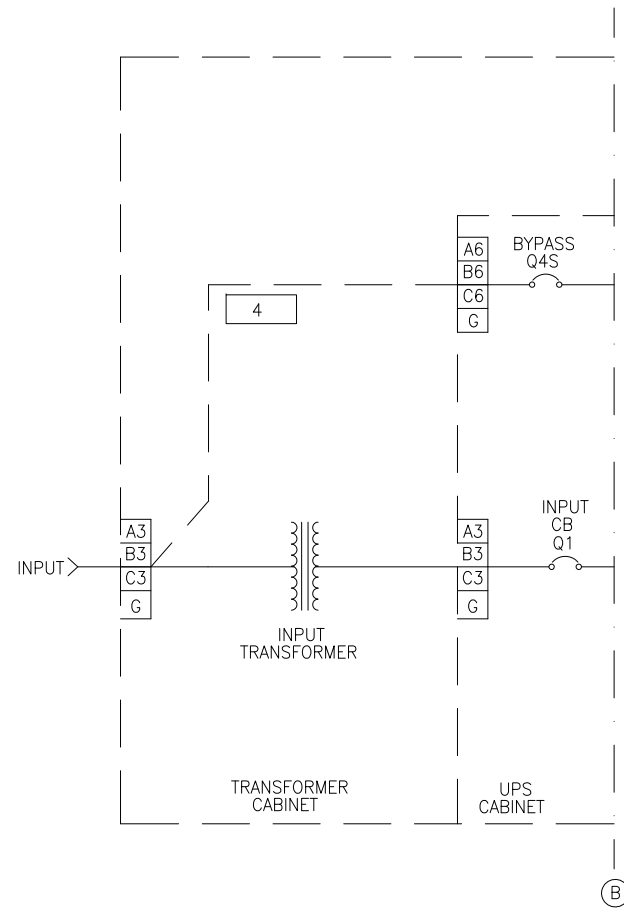
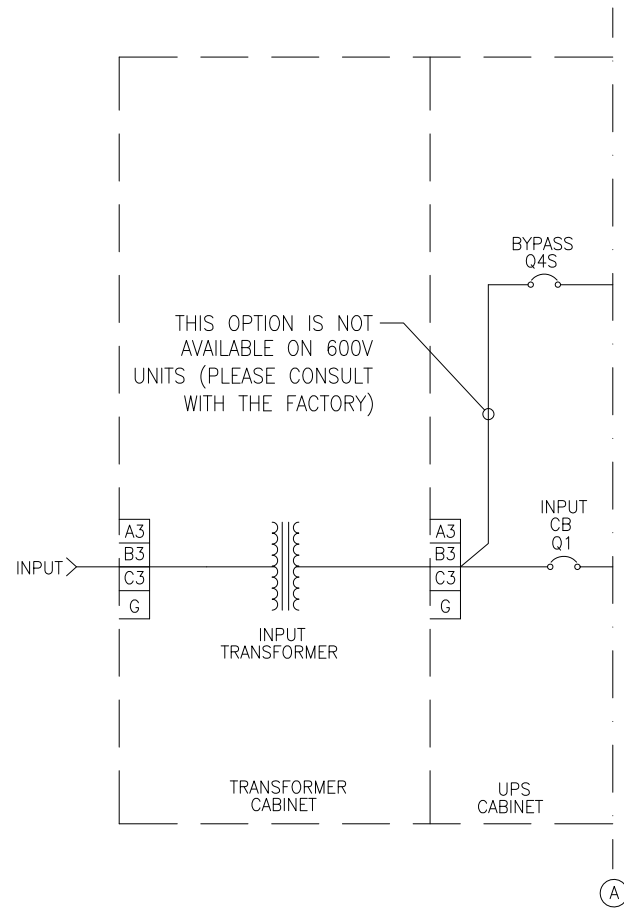
DWG NO: 90-134051-00-SD REV. 5

DRAWN: C KRISHNA/S CUNHA 19-AUG-15

ENGINEER: LG/E WONG 19-AUG-15

APPROVED: LNA/Y NGUYEN 19-AUG-15

PROJ ANGLE N/A



SINGLE LINE DIAGRAM

INPUT CONFIGURATIONS (3W+G OUTPUT ONLY)

SYSTEM ELECTRICAL CHARACTERISTICS:

| Rating, KVA/KW | 300/270 | 400/360 | 500/450 |
|--------------------|---------------------------------|---------------------------------|---------------------------------|
| Input Voltage | 600VAC, 3PH, 3W+G, 60hz. | 600VAC, 3PH, 3W+G, 60hz. | 600VAC, 3PH, 3W+G, 60hz. |
| Phase Rotation | ABC clockwise | ABC clockwise | ABC clockwise |
| Input Current | 322 amps nominal, 404 amps max. | 441 amps nominal, 523 amps max. | 569 amps nominal, 652 amps max. |
| Output Voltage | 600VAC, 3PH, 3or4W+G, 60hz. | 600VAC, 3PH, 3or4W+G, 60hz. | 600VAC, 3PH, 3or4W+G, 60hz. |
| Output Current | 289 amps | 385 amps | 481 amps |
| Bypass Voltage | 600VAC, 3PH, 3or4W+G, 60hz. | 600VAC, 3PH, 3or4W+G, 60hz. | 600VAC, 3PH, 3or4W+G, 60hz. |
| Bypass Current | 289 amps | 385 amps | 481 amps |
| DC Float Voltage | 545 VDC | 545 VDC | 545 VDC |
| DC Nominal Voltage | 480 VDC | 480 VDC | 480 VDC |
| DC Cut-off Voltage | 390 VDC | 390 VDC | 390 VDC |
| DC Current (max) | 721 amps | 962 amps | 1195 amps |
| Q1 Rating | 1000AT/1200AF | 1000AT/1200AF | 1000AT/1200AF |
| Q4S, Q5N, SW | 700AT/800AF | 700AT/800AF | 700AT/800AF |
| QF1 Rating | 700AT/1000AF | 1000AT/1000AF | 1200AT/1200AF |

| | UPS | MBP | ISOL XFMR | CONFIG. |
|------|-----|-----|-----------|---------|
| 600V | ✓ | - | ✓ | ⓑ |
| | ✓ | ✓ | ✓ | ⓒ |

NOTES:

1. Follow the NEC (National Electrical Code) and other applicable local codes.
2. Customer must be responsible for connecting all MGE-supplied cables and where indicated, must be responsible to provided some cable. Battery voltage drop shall be kept to less than 1% based on the battery disconnect rating.
3. Input and Bypass shall not be provided from a corner-grounded delta system.
4. Remove these jumpers when separate bypass input is provided.
5. The UPS is equipped with this bonding jumper to meet NEC Article 250-5(D) and 250-26. Refer to MGE document 9110000.000 for the use or removal of this jumper.

THIS DRAWING AND SPECIFICATIONS HEREIN ARE THE PROPERTY OF SCHNEIDER ELECTRIC AND SHALL NOT BE COPIED, REPRODUCED OR USED IN WHOLE OR IN PART, AS THE BASIS FOR THE MANUFACTURE OR SALE OF ITEMS WITHOUT WRITTEN PERMISSION FROM SCHNEIDER ELECTRIC. THIS DRAWING IS BASED UPON LATEST AVAILABLE INFORMATION AND IS SUBJECT TO CHANGE WITHOUT NOTICE.



TITLE: MGE EPS 7000
600V, SINGLE MODULE
300/400/500KVA
SINGLE-LINE DIAGRAM

PROJECT: STD SUBMITTAL DRAWINGS SHEET 2 OF 2

DWG NO: 90-134051-00-SD
DRAWN: C KRISHNA 19-AUG-15
ENGINEER: E WONG 19-AUG-15
APPROVED: Y NGUYEN 19-AUG-15

REV. 1
PROJ ANGLE N/A