

BATTERY WIRING: STYLE-G

The following connections must be made to the shelf-1(Top shelf)

Battery-to-battery	Cables 1-12
Row-to-row	Cables 49-51
Shelf-to-shelf	Cable 61
Battery-to-terminal	Cable 63

The following connections must be made to the shelf-1(Top shelf)

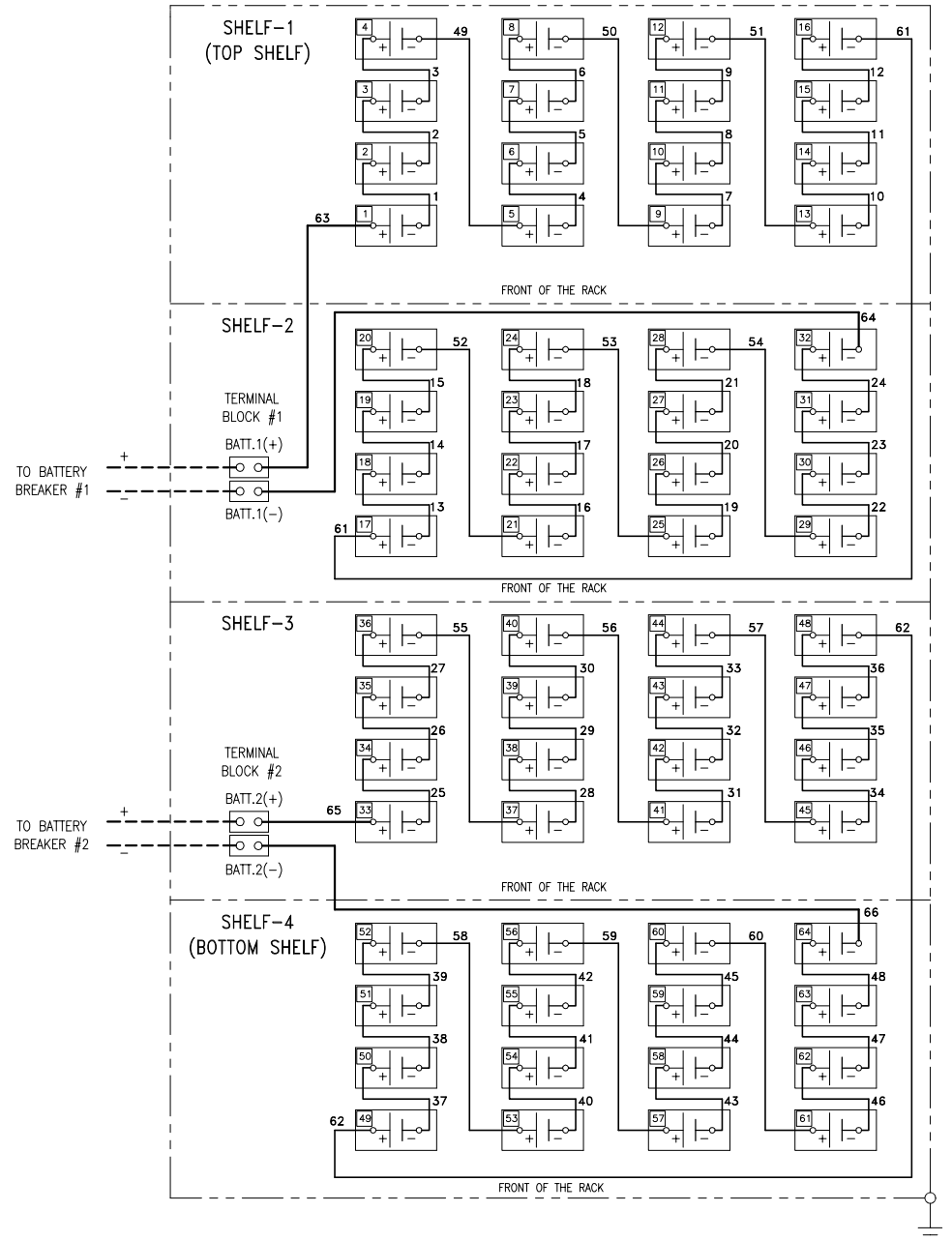
Battery-to-battery	Cables 13-24
Row-to-row	Cables 52-54
Shelf-to-shelf	None(accepts Cable 61)
Battery-to-terminal	Cable 64

The following connections must be made to the shelf-1(Top shelf)

Battery-to-battery	Cables 25-36
Row-to-row	Cables 55-57
Shelf-to-shelf	Cable 62
Battery-to-terminal	Cable 65

The following connections must be made to the shelf-1(Top shelf)

Battery-to-battery	Cables 37-48
Row-to-row	Cables 58-60
Shelf-to-shelf	None(accepts cable 62)
Battery-to-terminal	Cable 66



NOTES:

- = CABLING PROVIDED BY OTHERS.
- INSTALLATION MUST COMPLY WITH ALL EUROPEAN AND LOCAL ELECTRICAL REGULATIONS..

THIS DRAWING AND SPECIFICATIONS HEREIN ARE THE PROPERTY OF AMERICAN POWER CONVERSION AND SHALL NOT BE COPIED, REPRODUCED OR USED IN WHOLE OR IN PART, AS THE BASIS FOR THE MANUFACTURE OR SALE OF ITEMS WITHOUT WRITTEN PERMISSION FROM APC. THIS DRAWING IS BASED UPON LATEST AVAILABLE INFORMATION AND IS SUBJECT TO CHANGE WITHOUT NOTICE.

TITLE: SILCON 10-80kW UPS
BATTERY RACK
(LARGE)
10-80kW, 400V (STYLE-G)

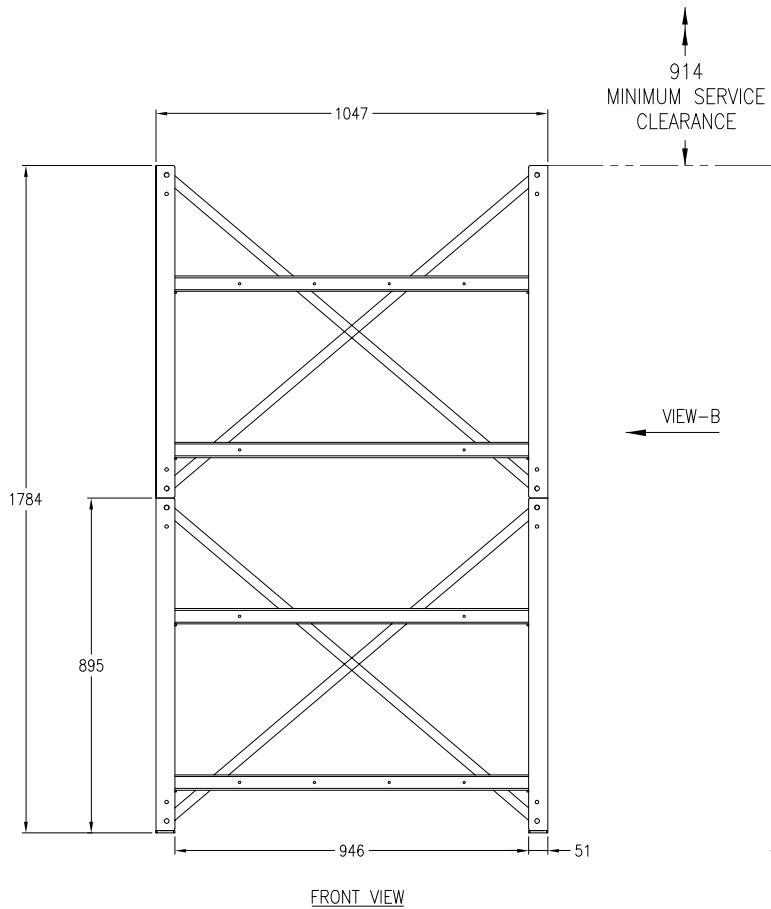
DWG NO: SLR10K80H1-FB-CD
DRAWN BY: K NAGENDRA
CHECKED BY: M LEPARD
ENGINEER: C LARSEN

REV. -
17/05/04
27/05/04
27/05/04

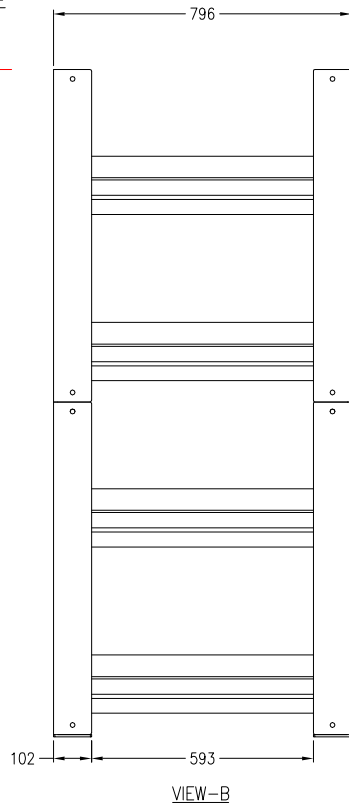
PROJECTION
⊕



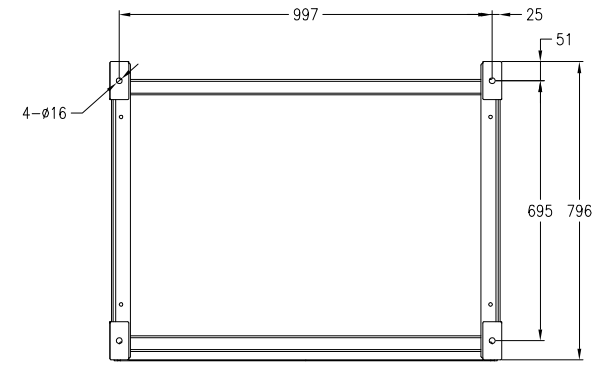
PROJECT: SUBMITTAL DRAWING SHEET 1 OF 3



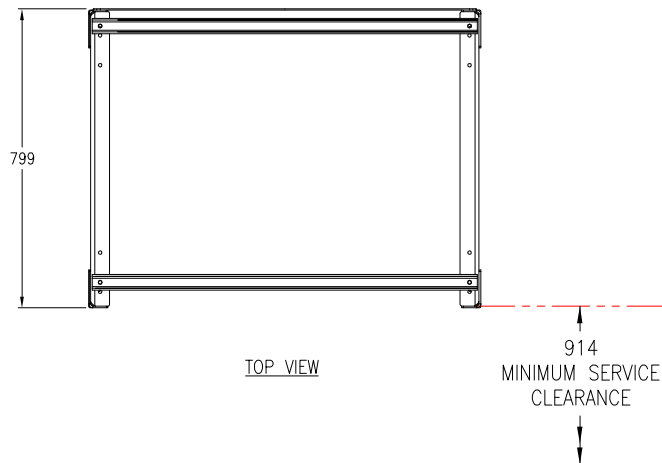
FRONT VIEW



VIEW-B



BOTTOM VIEW



TOP VIEW

NOTES:

- PLEASE REFER TO APC BATTERY INSTALLATION MANUAL.
- ALL DIMENSIONS ARE IN MILLIMETERS.
- CABLE ENTRY IS TOP OR BOTTOM OF UNIT.
- BATTERY AND WEIGHT INFORMATION -

BATTERY TYPE (MODEL)	BATTERY WEIGHT	RACK WEIGHT	TOTAL WEIGHT
FIAMM 1 (12XLB120)	14.0kg	162kg	1058kg

- BATTERY RUN-TIME CHART (BASED ON PF=1.0).

SKU NUMBER	10kW	20kW	40kW	60kW	80kW
SLR10K80H1-FB x1	94 min	40 min	14 min	7 min	4 min
SLR10K80H1-FB x2	/	96 min	40 min	23 min	14 min
SLR10K80H1-FB x3	/	159 min	68 min	41 min	27 min
SLR10K80H1-FB x4	/	/	95 min	58 min	41 min

- RUN-TIMES ARE INDICATED UPTO MAXIMUM OF 4-STRINGS OF BATTERIES.
- INSTALLATION MUST COMPLY WITH ALL EUROPEAN AND LOCAL ELECTRICAL REGULATIONS.

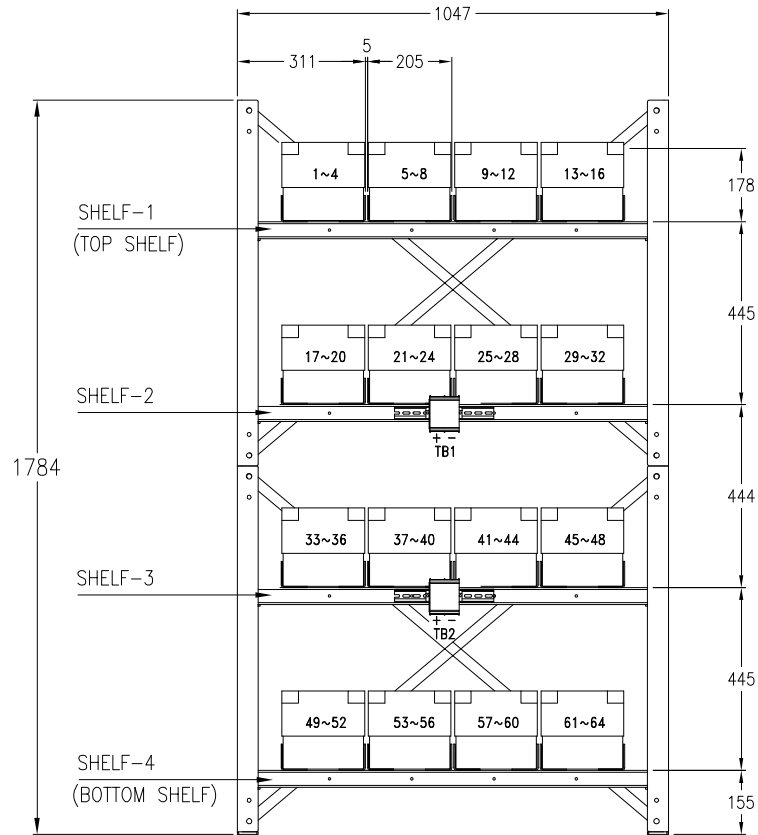
THIS DRAWING AND SPECIFICATIONS HEREIN ARE THE PROPERTY OF AMERICAN POWER CONVERSION AND SHALL NOT BE COPIED, REPRODUCED OR USED IN WHOLE OR IN PART, AS THE BASIS FOR THE MANUFACTURE OR SALE OF ITEMS WITHOUT WRITTEN PERMISSION FROM APC. THIS DRAWING IS BASED UPON LATEST AVAILABLE INFORMATION AND IS SUBJECT TO CHANGE WITHOUT NOTICE.

TITLE: SILCON 10-80kW UPS
BATTERY RACK
(LARGE)
10-80kW, 400V (STYLE-G)

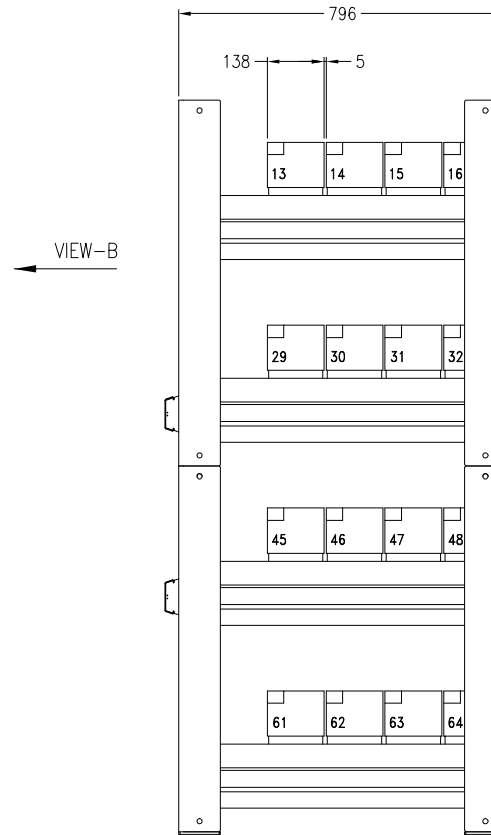
DWG NO: SLR10K80H1-FB-MM1
DRAWN BY: K NAGENDRA
CHECKED BY: M LEPARD
ENGINEER: C LARSEN
17/05/04
27/05/04
27/05/04

REV. -
PROJECTION

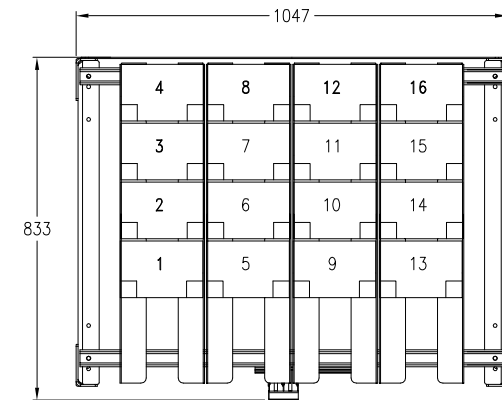




FRONT VIEW



VIEW-B



TOP VIEW (SHELF-1~4)
(Only Shelf-1 battery No.s shown for reference)

NOTES:

- PLEASE REFER TO APC BATTERY INSTALLATION MANUAL.
- ALL DIMENSIONS ARE IN MILLIMETERS.
- LOADING AND WIRING OF THE BATTERY SHOULD BE DONE FROM BOTTOM SHELF TO THE TOP SHELF.
- INSTALLATION MUST COMPLY WITH ALL EUROPEAN AND LOCAL ELECTRICAL REGULATIONS.

THIS DRAWING AND SPECIFICATIONS HEREIN ARE THE PROPERTY OF AMERICAN POWER CONVERSION AND SHALL NOT BE COPIED, REPRODUCED OR USED IN WHOLE OR IN PART, AS THE BASIS FOR THE MANUFACTURE OR SALE OF ITEMS WITHOUT WRITTEN PERMISSION FROM APC. THIS DRAWING IS BASED UPON LATEST AVAILABLE INFORMATION AND IS SUBJECT TO CHANGE WITHOUT NOTICE.

TITLE: SILCON 10-80kW UPS
BATTERY RACK
(LARGE)
10-80kW, 400V (STYLE-G)

DWG NO: SLR10K80H1-FB-MM2
DRAWN BY: K NAGENDRA
CHECKED BY: M LEPARD
ENGINEER: C LARSEN

REV. —
17/05/04
27/05/04
27/05/04

PROJECTION

